



**Jonathan Markgraaf**

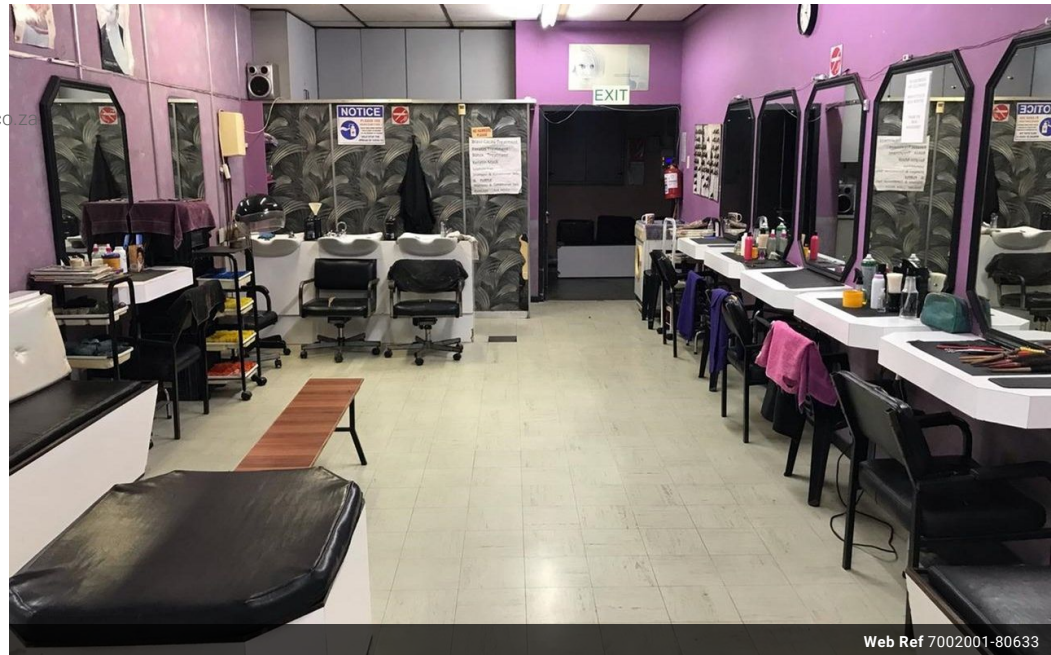
084-419-2591

jonathan.markgraaf@expsouthafrica.co.za

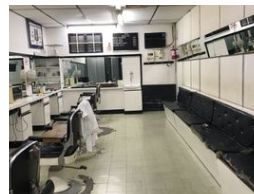
Contact eXp Realty

087 8212575

South Africa



Web Ref 7002001-80633



R595,000



0



0

### Barber and hairdressing unit for sale

For sale: 85m2 commercial unit Located in the Woolworths Building at Town Centre Mitchell's Plain. This long-standing family business operating since 1986, has been passed down have been passed down through generations. Positioned just off the ramp from the station, the unit enjoys a significant amount of foot traffic. It is currently divided into 2 sections: one for a barber and the other for a hairdresser. Rental income potential ranging from R13,000 and R15,000. The building offers 24-hour security and locks with shutter doors and safety gates for added protection overnight. Monthly rates R 1,588 and Levies R2,346.93. Asking Price

### Features

**Zoning** Commercial

#### Sizes

Floor Size 85m²

#### Extras

Common Areas Glass Siding Brick Pets Not Allowed