



**Warren Fielding**  
0745881198  
warren.fielding@expsouthafrica.co.za

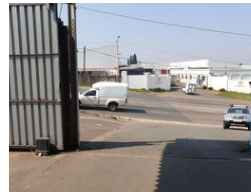
Contact eXp South Africa

087 8212575

Old Main Road  
Johannesburg  
South Africa



Web Ref 7002001-4407



R5,500,000

 0  10

Road facing manufacturing warehouse.

The Industrial property comprises of two sections in the Sectional Title Scheme known as 6 Otto Volek Road. The combined extent of Section 3 4 is 1 089 square meters. The property is situated in New Germany and is accessed from Otto Volek Road, located on the corner of Franz Volek and Otto Volek Roads, being just a short distance from Shepstone Road. The location of the property makes it central and affording it easy access to some of the main arterial routes in and out of Pinetown, namely the M19. The Main entrance to the property affords access to the admin block / offices and secured parking area. The second entrance allows direct access to the warehouse by means of a roller shutter door. The property comprises the following:- 3 Phase Power with a 200 Amp

## Features

**Zoning** Commercial

**Exterior**  
Open Parking Bays 10

**Sizes**  
Floor Size 1,089m<sup>2</sup>  
Land Size 1,500m<sup>2</sup>