



Conrad Maritz  
064-934-3259  
conrad.maritz@expsouthafrica.co.za

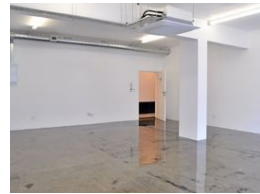
Contact eXp Realty

087 8212575

South Africa



Web Ref 7002001-85422



R9,750 pm

Gross Monthly Rental R9,750 Excl. VAT



0



0

## A Space That Gets You Noticed

Tucked away in the quietly charismatic Jamieson Street, this open-plan 65m2 office is your invitation to work above the buzz yet remain deeply connected to the city's creative heartbeat. Perched proudly on the 1st floor, it delivers a beautiful blend of professional polish and laid-back flair that inspires productivity, collaboration, and big ideas. Step into a space where epoxy concrete floors shimmer with style, four striking roof-to-floor slim aluminium windows pour in natural light and city views remind you that you're right where the action happens. From your first step through its solid wooden door, you're met with an atmosphere that feels both grounded and aspirational. The open-plan layout makes it wonderfully versatile

## Features

**Zoning** Commercial

### Sizes

Land Size 65m²

### Extras

Near Medical Center Near Park Near Hospital Lift-Elevator Near Shopping Mall Near Railway station Safe Location Pets Not Allowed Good reachable traffic Renovated City Center High Traffic Unfurnished Near Shops Concrete Near Fitness centre Near Schools Near Bus Near Congress-Centre