

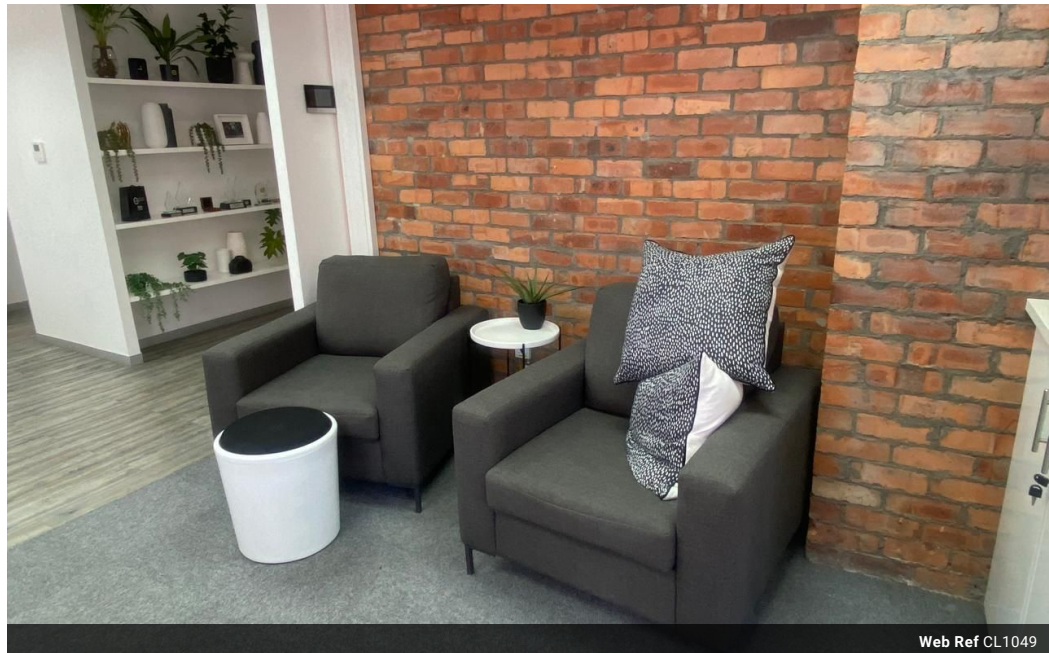


Ryan Perumal  
082-781-3836  
ryan.perumal@expsouthafrica.co.za

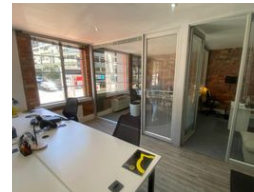
Contact eXp South Africa

087 8212575

Old Main Road  
Johannesburg  
South Africa



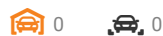
Web Ref CL1049



R32,800 pm

**Gross Monthly Rental** R32,800 Excl. VAT  
**Monthly Rates** R1 Excl. VAT

**Monthly Levy** R1 Excl. VAT



## Office To Rent in De Waterkant

UNIT 108 : Amazingly light and bright 164m2 office space now available to let at Sovereign Quay on Somerset Road in De Waterkant.

Located across the road from Hill House and First National Bank and a minute away from the Cape Quarter Shopping Centre this space is also a short walk into the City Centre and a short drive to the V&A Waterfront and the CTICC.

- It offers :
- 164m2 of A-Grade space
  - NO loadshedding
  - On public transport route
  - Close to shops and restaurants
  - 24/7 Security
  - 24/7 Access
  - On-site parking for tenants and visitors
  - Basement parking at R1800 per bay
  - Amazing views
  - Generous fit-out allowance from the landlord
  - Option as a move-in ready space

## Features

**Zoning** Commercial

### Interior

Air Conditioning Yes

### Exterior

Security Yes

### Sizes

Floor Size 164m²

### Extras

24 Hour Access Air Conditioner kitchen no loadshedding Near Bus Service Near Mini Bus Service Near Train Service