



Ryan Perumal
082-781-3836
ryan.perumal@expsouthafrica.co.za

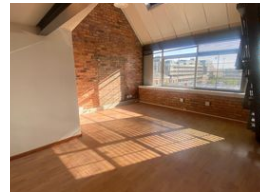
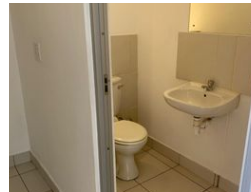
Contact eXp South Africa

087 8212575

Old Main Road
Johannesburg
South Africa



Web Ref CL984



R15,600 pm

Gross Monthly Rental R15,600 Excl. VAT
Monthly Rates R1 Excl. VAT

Monthly Levy R1 Excl. VAT



Great Little Office Space to Let in De Waterkant

This lovely space is on the third floor in the sought-after Sovereign Quay office block on Somerset Road in De Waterkant.

Very popular due to it's location, visibility and accessibility, Sovereign Quay is the ideal location for any company to set up offices. Conveniently close to public transport links and a myriad of retail offerings the location is prime with a short walk into the City Centre and a short distance away from the V&A Waterfront and the CTICC.

Offering 88m2 over two levels the offices are move-in ready and features:

- great natural lighting,
- a kitchenette,
- a bathroom within the unit,
- storage/server room,
- open plan ground floor space,
- and fitted out mezzanine level offices,
- in addition there is on-site parking,
- and 24/7 security.

Features

Building Name
Zoning

SOVERIGN QUAY
Commercial

Interior

Air Conditioning

Yes

Exterior

Security

Yes

Sizes

Floor Size

78m²

Extras

Wheelchair Accessible Air Conditioner Immaculate Condition Storeroom Toilet kitchen Secure Parking