



**Conrad Maritz**  
064-934-3259  
conrad.maritz@expsouthafrica.co.za

Contact eXp Realty

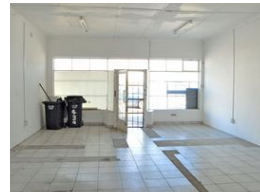
087 8212575

South Africa

NEW



Web Ref 7002001-90849



R13,500 pm

Gross Monthly Rental R13,500 Excl. VAT



0



0

### Your Next Big Move Starts Here

Step into possibility and make your next business move in the heart of Lansdowne, Cape Town. This charming industrial unit offers a bold, clean layout with just the right mix of street presence and back-end muscle.

Type: Industrial  
Size 161m2  
Store front / Office/ Reception AREA  
Glass Door with security gate  
Road access  
Tiled flooring  
Toilet

Back Workshop  
Concrete floor  
3 Phase & Pre-paid electricity  
4 x 3 Phase sockets

Ground Floor

### Features

**Zoning** Commercial

#### Extras

Near Railway station Near Shopping Mall Good reachable traffic Near Medical Center Pets Not Allowed On Busy Road Near Fitness centre Near Airport Near Bus Near Hospital Near Shops Concrete