

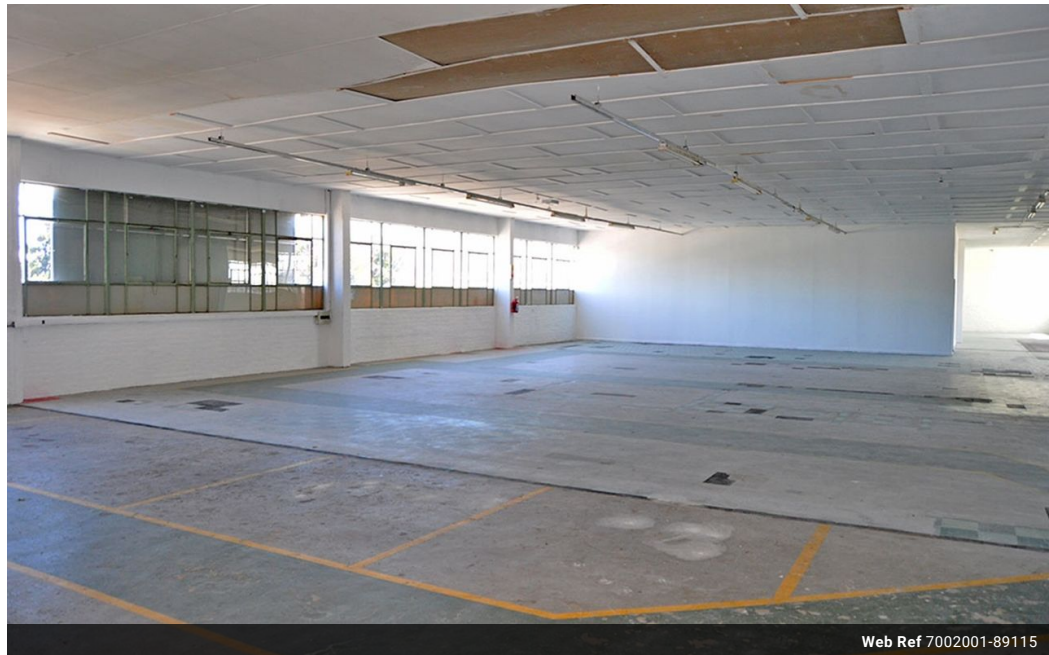


Conrad Maritz
064-934-3259
conrad.maritz@expsouthafrica.co.za

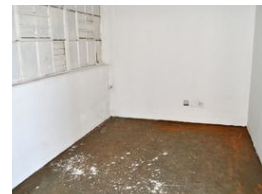
Contact eXp Realty

087 8212575

South Africa



Web Ref 7002001-89115



R52,250 pm

Gross Monthly Rental R52,250 Excl. VAT



Where Bold Ideas Find Their Home

There's something special about a space that just feels right—a place where creativity flows, ideas spark, and work doesn't feel like work. Welcome to a sensational second-floor massive office in the vibrant heart of Maitland, where wooden doors open into a world of possibility and potential.

This stunning open-plan office stretches across 950m² of functional flair. You're greeted by polished concrete floors and an abundance of windows that fill the space with light and energy, offering sweeping views of the city skyline that inspire big thinking. With three enclosed offices, your team has the perfect balance between private zones and collaborative open space. The built-in kitchenette is a total win—cupboards, a sink, space for a dining table—ideal for those mid-morning coffee breaks or casual strategy

Features

Zoning Commercial

Sizes

Floor Size 950m²

Extras

Kitchen - Extra Near Public Transportation Near Shopping Mall Near Medical Center Pets Not Allowed City Center Near Airport Safe Location Near Congress-Centre Good reachable traffic Open Near Shops High Traffic Near Fitness centre Near Railway station Near Bus Near Hospital On Busy Road