



Alencia Martin
081-332-9376
alencia.martin@expsouthafrica.co.za

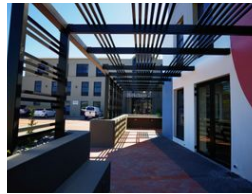
Contact eXp Realty

087 8212575

South Africa



Web Ref 7002001-72001



R51,850 pm

Gross Monthly Rental R51,850 Excl. VAT



Discover Your Ideal Office Space at Our Office Park! Whitebox- 305 sqm

River Park -Birkdale 2 offers a prime location for your business needs. Here's why you should consider this space: River Park is a corporate park that offers everything you need for your business. This office space is situated on the 1st floor- Middle Wing, with large windows that let in natural light and offer stunning views of Table Mountain. The space is white box-ready, meaning you can customize it to suit your needs and preferences. The office park has a canteen on the premises, where you can enjoy delicious meals and snacks. The location is also convenient, as it is close to major highways and public transport. You can rest assured that your safety and security are taken care of, as the office park has 24-hour security and access control. The office

Features

Zoning Commercial

Exterior

Security Yes

Extras

Restaurant area Near Public Transportation Closed Circuit TV Modern Near Airport Near Golf Course Pets Not Allowed Near Bus Good reachable traffic Fire Escape Renovated Lift-Elevator Air Conditioning Unit Near Highway Near Hospital Balcony Near Railway station