

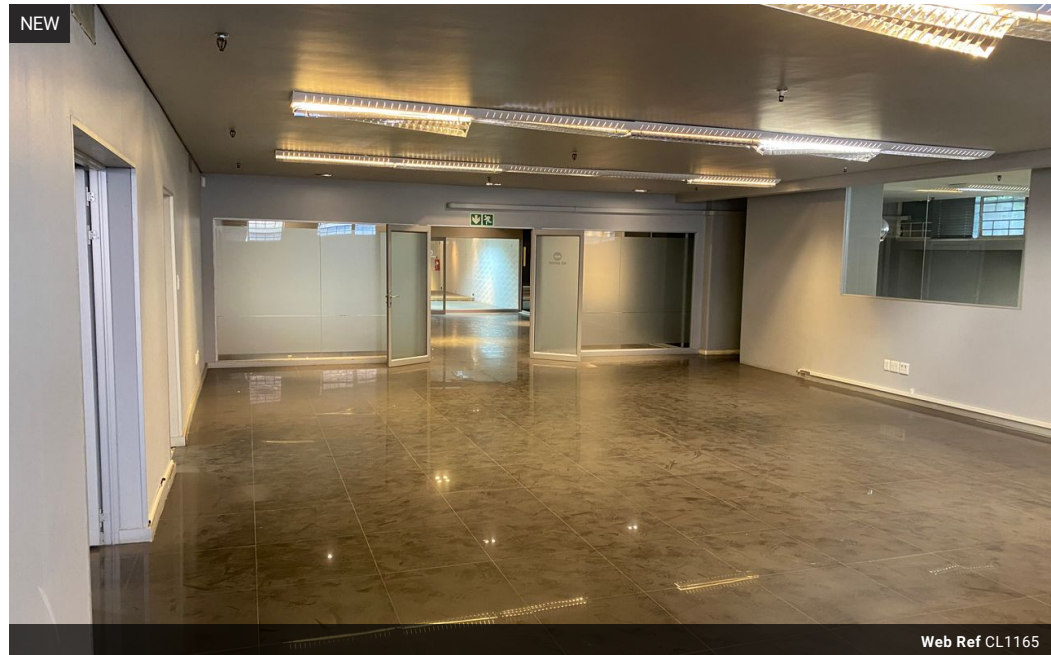


Ryan Perumal
082-781-3836
ryan.perumal@expsouthafrica.co.za

Contact eXp South Africa

087 8212575

Old Main Road
Johannesburg
South Africa



Web Ref CL1165



R150,000 pm

Gross Monthly Rental R150,000 Excl. VAT
Monthly Rates R1 Excl. VAT

Monthly Levy R1 Excl. VAT



1500m2 Office Space To Let

Formerly home to a prestigious design company as their showroom and warehouse this 1500m2 space can be configured to suit the requirements of any tenant.

It can easily be reconfigured to accommodate an executive or creative team on a single floor-plate. This contemporary office environment offers an ideal setting for businesses seeking a strategic location with convenient accessibility. The spacious layout and modern design with ample natural light cascading through large windows creates an inspiring workplace. The open plan work area allows for versatile office configurations, fostering collaboration and productivity and in addition there is a well-equipped kitchenette to meet the needs of your team whilst the surrounding neighborhood offers a vibrant mix array of cafes and other amenities.

Features

Zoning Commercial

Interior

Air Conditioning Yes

Exterior

Security Yes

Sizes

Floor Size 1,500m²

Extras

24 Hour Access 24 Hour Response Air Conditioner Alarm System Near Bus Service Near Mini Bus Service Near Train Service