

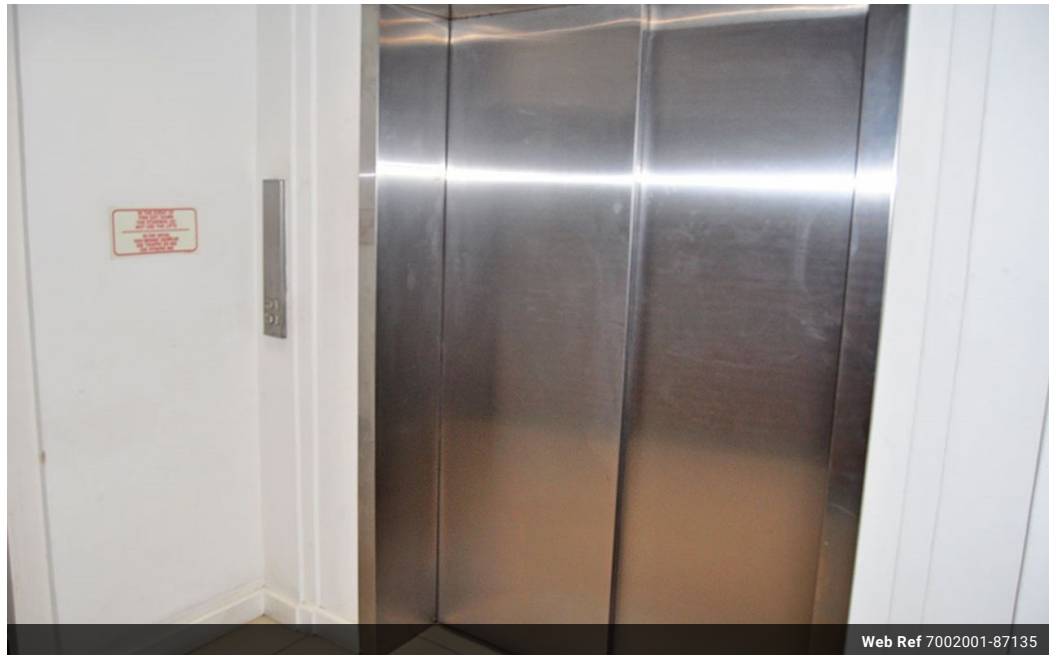


Conrad Maritz  
064-934-3259  
conrad.maritz@expsouthafrica.co.za

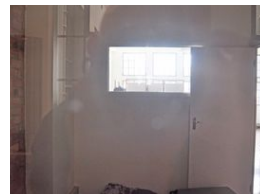
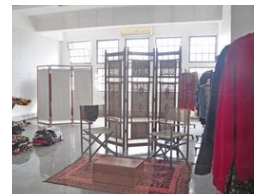
Contact eXp Realty

087 8212575

South Africa



Web Ref 7002001-87135



R5,490 pm

Gross Monthly Rental R5,490 Excl. VAT



### Step Up to a Workspace That Works Hard

Tucked into the ever-creative heartbeat of Woodstock, this first-floor gem at Salt Circle is ready to energise your business with bold ideas and city views.

Step through sleek glass doors into a light-filled, open-plan office where concrete flooring meets industrial-style steel-framed windows – a perfect fusion of raw edge and creative chic. The air here hums with potential, as the space flows effortlessly from work zones to a tidy kitchenette, complete with sink and cupboard space for those essential morning brews and late-night brainstorm snacks. Lift access means ease for clients and team alike, while a leafy communal courtyard offers an inspiring outdoor breakaway for coffee catch ups or midday resets.

### Features

**Zoning** Commercial

**Exterior**  
Security Yes

#### Extras

Near Schools City Center Lift-Elevator Good reachable traffic Near Shops Closed Circuit TV  
Pets Not Allowed Concrete Safe Location Near Hospital Near Public Transportation Near  
Shopping Mall Near Railway station Near Congress-Centre Near Medical Center