



Tertius Van Staden

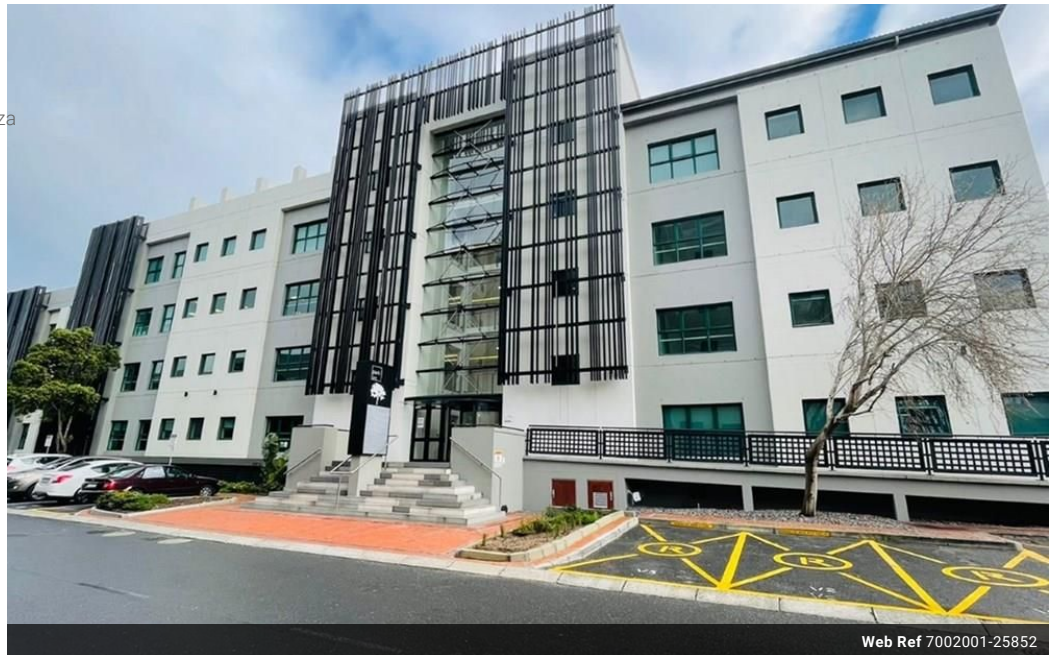
060-912-3637

tertius.vanstaden@expsouthafrica.co.za

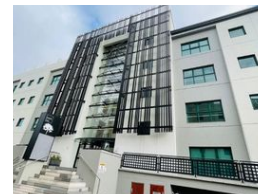
Contact eXp South Africa

087 8212575

Old Main Road
Johannesburg
South Africa





Web Ref 7002001-25852



R114,840 pm

Gross Monthly Rental R114,840 Excl. VAT

 0  3

PRIME OFFICE SPACE TO LET IN CENTURY CITY

793m² Ground Floor Unit Park One Century City

UPMARKET PRIME OFFICE SPACE

Park One offers a A-grade commercial office space. It has a leading business lifestyle and entertainment hubs on its doorstep.

Close to Canal Walk.

Close to MyCiti bus stop and close to all other modes of public transport.

Wheelchair friendly.

Amazing views across to Table Mountain and surrounded by canal waterways.

Central courtyard for a meeting or general coffee break.

Park One offers customisable office space - with many options of space available on all 4 floors. Having had a recent upgrade this office block offers a fresh and new up-to-date modern appearance.

Security, rapid response with 24-hour vehicle and pedestrian patrol.

Generator

Parking bays both in the basement and open plus parking for visitors as well.

Features

Zoning Commercial

Exterior
Open Parking Bays 3

Sizes
Floor Size 793m²
Land Size 793m²