

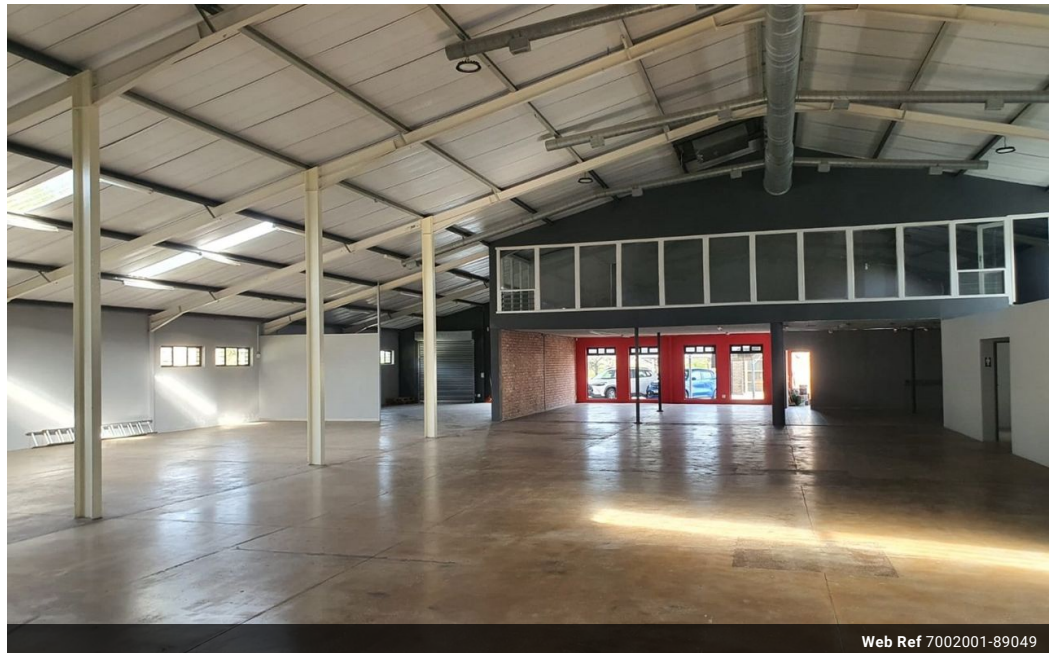


Ian Knott
072-226-3189
ian.knott@expsouthafrica.co.za

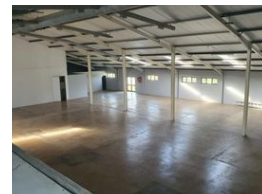
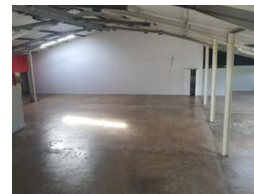
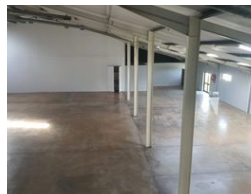
Contact eXp Realty

087 8212575

South Africa



Web Ref 7002001-89049



R88,000 pm

Gross Monthly Rental R88,000 Excl. VAT

 0  20

Prime 1100m2 Retail Warehouse To Let on William Moffet

This high-exposure 1100m2 retail warehouse offers exceptional visibility and branding opportunities, perfectly positioned on one of the city's busiest routes. Its central location makes it ideal for customer-facing operations, wholesale distribution, or destination retail.

The portal-style warehouse boasts impressive internal height and power-floated floors, with a robust 3-phase electrical supply to accommodate a range of operational needs. A fully centralized air-conditioning system ensures comfort throughout the main floor, while an inverter system is available by negotiation for added power stability.

Dual access points offer seamless logistics—rear entry for deliveries and a dedicated front customer entrance leading from a large tarred parking area, enhancing both convenience and flow for staff and visitors.

Features

Zoning Commercial

Interior

Floor Loading Cap.	20 Tn/m ²
Air Conditioning	Yes
Power 3 Phase	Yes
Power Amps	60

Exterior

Security	Yes
Open Parking Bays	20

Sizes

Floor Size	1,100m ²
------------	---------------------

Extras

Security - System Air Conditioning Unit Air Conditioner High Speed Internet Wheelchair Accessible Alarm