



Meshaan Naidoo

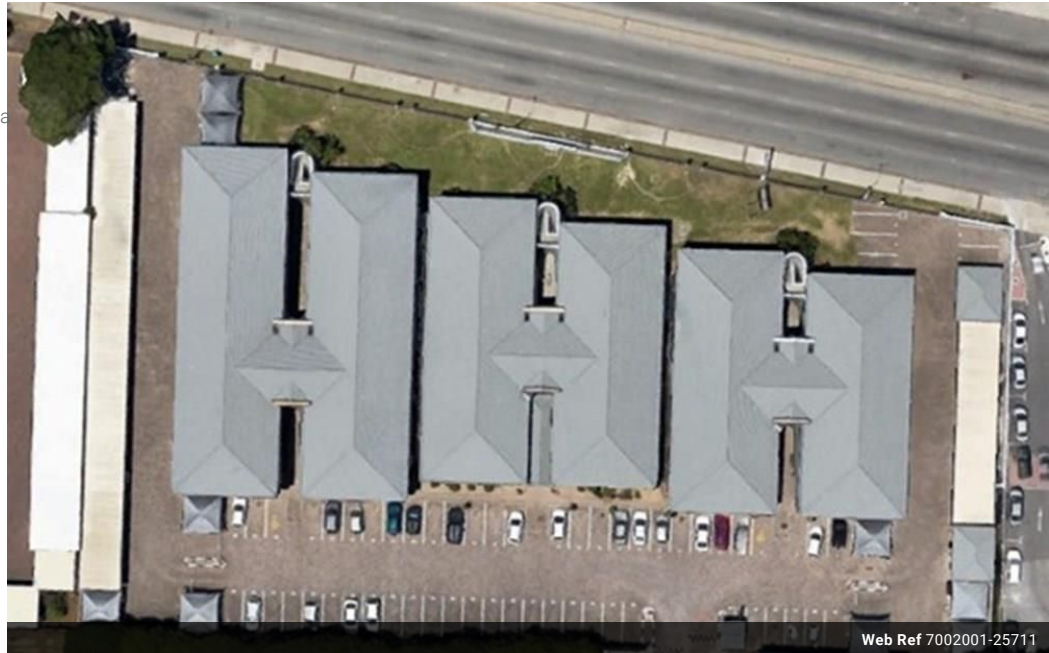
079-878-8306

meshaan.naidoo@expsouthafrica.co.za

Contact eXp South Africa

087 8212575

Old Main Road
Johannesburg
South Africa



Web Ref 7002001-25711



R10,000 pm

Gross Monthly Rental R10,000 Excl. VAT



0



0

Prime offices to rent

Upmarket offices to rent in Metropolitan Office Park, Greenacres, 91m²

Excellent location, next to the entrance to the Bridge Shopping Centre, easily accessible and convenient. Well maintained and in an office park with 24-hour security.

The premises are situated on the first floor and comprise of a reception, 2 offices, a storeroom, communal kitchenette.

Open and covered parking bays are available at an additional cost.

Monthly rental of R10 000 plus vat, excluding parking and municipal charges.

Features

Zoning Commercial

Sizes

Floor Size 91m²