



**Meshaan Naidoo**  
079-878-8306  
meshaan.naidoo@expsouthafrica.co.za

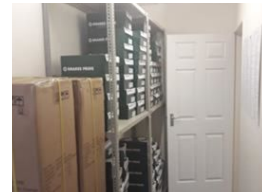
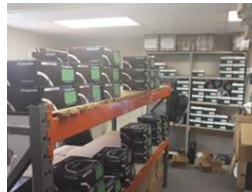
Contact eXp Realty

087 8212575

South Africa



Web Ref 7002001-70129



R12,120 pm

Gross Monthly Rental R12,120 Excl. VAT



## Prime Office & Warehouse Space in Newton Park!

Location:22 Mangold Street, Newton Park

Unit 1 Features:ReceptionOfficeBoardroomKitchenOpen-plan area

Size:202m2

Rent:R60.00/m2 excl. VAT

Amenities:Ample parkingCentral location, close to amenities

Newton Park is a vibrant commercial hub, offering easy access to shopping centres, restaurants, and other amenities. With its good safety record and convenient location, this space is ideal for businesses looking for a secure and accessible workspace.

## Features

**Zoning** Commercial

### Exterior

Security Yes

### Sizes

Floor Size 202m²  
Land Size 202m²

### Extras

Air Conditioning Unit Near Motorway Near Fitness centre Near Highway On Quiet Road Near Medical Center Fibre Security - System Near University/Campus Frequency location Near Bus Safe Location Near Shopping Mall Covered Parking Near Hospital City Center Near Public Transportation Alarm System Near Golf Course High Speed Internet Near Schools Wheelchair Accessible Near Park Good reachable traffic Near Shops