



Meshaan Naidoo

079-878-8306

meshaan.naidoo@expsouthafrica.co.za

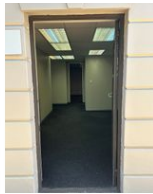
Contact eXp Realty

087 8212575

South Africa

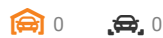


Web Ref 7002001-77677



R11,505 pm

Gross Monthly Rental R11,505 Excl. VAT



Office Space Available in Prime Office Park

A Space for Every Need

Southern Life Gardens - Block F, Ground Floor

Available Immediately

Size:85.2m²

Rental Rate:R135/m² (Excl. VAT & parking)

This functional office space features:Reception area2 open-plan officesKitchenette

Parking Options:Basement Parking: R600/bay (Excl. VAT)Open Parking: R550/bay (Excl. VAT)Open Church Parking: R275/bay (Excl. VAT)Covered Church Parking: R325/bay (Excl. VAT)

Key Amenities:24/7 on-site securityGenerator backupBorehole water supply

Features

Zoning Commercial

Exterior

Security Yes

Sizes

Floor Size 85m²

Land Size 85m²

Extras

Near Fitness centre Near Park City Center Near Bus Electrical generator Energy Backup Unit Water - Tank Air Conditioning Unit Wheelchair Accessible Fibre Near Shops Near Public Transportation Battery/Backup Inverter High Traffic Downtown High Speed Internet Security - System Pets Not Allowed Near Schools On Busy Road Alarm System Good reachable traffic Near Children's Park Near Highway On Quiet Road Near University/Campus Near Medical Center Near Motorway Near Shopping Mall Safe Location Frequency location Near Hospital Closed Circuit TV Near Golf Course