



Meshaan Naidoo

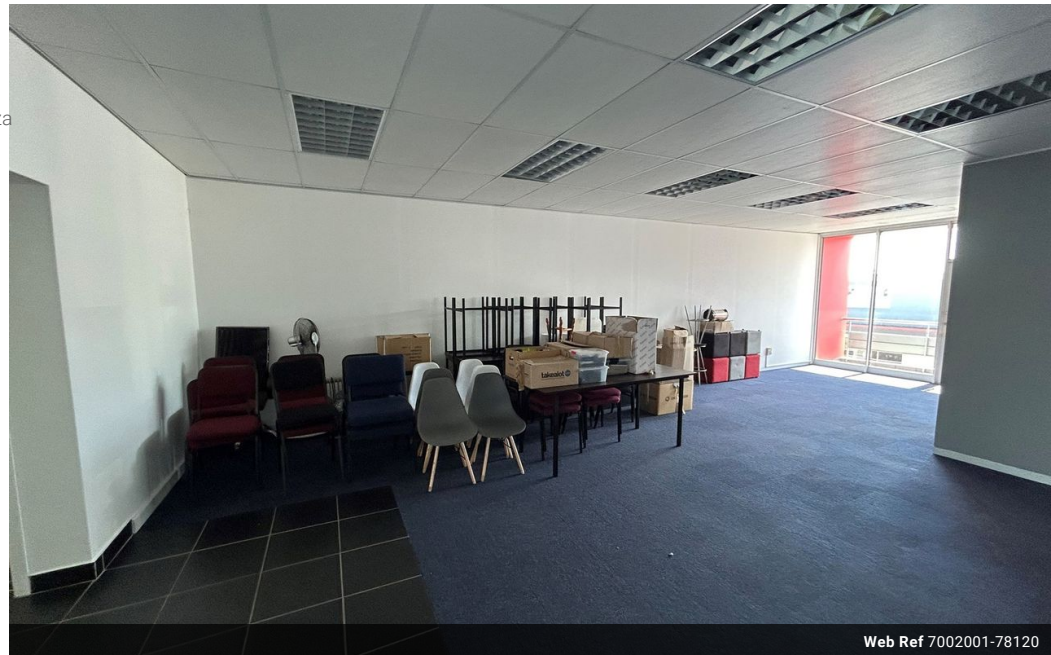
079-878-8306

meshaan.naidoo@expsouthafrica.co.za

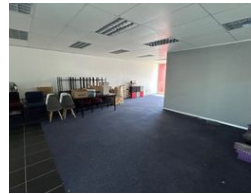
Contact eXp Realty

087 8212575

South Africa

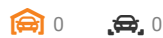


Web Ref 7002001-78120



R11,150 pm

Gross Monthly Rental R11,150 Excl. VAT



Prime Retail/Office Space Available

Secure and Professional Workspaces

50 on 4th - Suite 4, 4th Avenue, Newton Park

Available Immediately

Size:106m²

Total Monthly Cost:R11,150.00 (Excl. VAT)

This first-floor office space features:Carpeted office/boardroom with a large open-plan office areaKitchenette and toilet facilitiesPrivate balconyPrepaid electricity and metered water

Highlights:Common areas cleaned and maintained by the landlordReserved parking bays available at R525/month (Excl. VAT)Premises secured with two lockable security gates

Features

Zoning Commercial

Sizes

Floor Size 106m²

Land Size 106m²

Extras

Fronting on Lagoon Downtown High Speed Internet Near Shops Near Golf Course Near University/Campus City Center Safe Location Near Fitness centre Near Hospital Near Public Transportation High Traffic Alarm Fibre Near Bus Near Motorway Frequency location Pets Not Allowed Near Park Good reachable traffic Near Children's Park Near Medical Center Near Schools On Quiet Road On Busy Road Near Shopping Mall Near Highway