



Meshaan Naidoo

079-878-8306

meshaan.naidoo@expsouthafrica.co.za

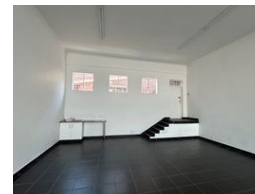
Contact eXp Realty

087 8212575

South Africa



Web Ref 7002001-77956



R15,750 pm

Gross Monthly Rental R15,750 Excl. VAT



0



0

Prime Retail/Office Space Available

Bracewell Centre - Shop 5, 308 Cape Road, Newton Park

Available Immediately

Size:100m²

Total Monthly Cost:R15,750.00 (Excl. VAT)

This prime retail/office space features:Huge open-plan layout with tiled flooringKitchenetteFiber-ready connectivityCommunal ablutionsPrepaid electricity

Highlights:Highly visible corner unit on Cape RoadPremises can be altered to suit tenant requirementsPlenty foot traffic

Features

Zoning Commercial

Exterior

Security Yes

Sizes

Floor Size 100m²

Land Size 100m²

Extras

Downtown High Speed Internet Near Shops Near University/Campus Security - System Wheelchair Accessible City Center Safe Location Near Fitness centre Near Hospital Near Public Transportation High Traffic Alarm Fibre Near Bus Near Motorway Frequency location Pets Not Allowed Near Park Good reachable traffic Near Children's Park Near Medical Center Near Schools On Quiet Road On Busy Road Near Shopping Mall Washing Facilities(in building) Near Highway