

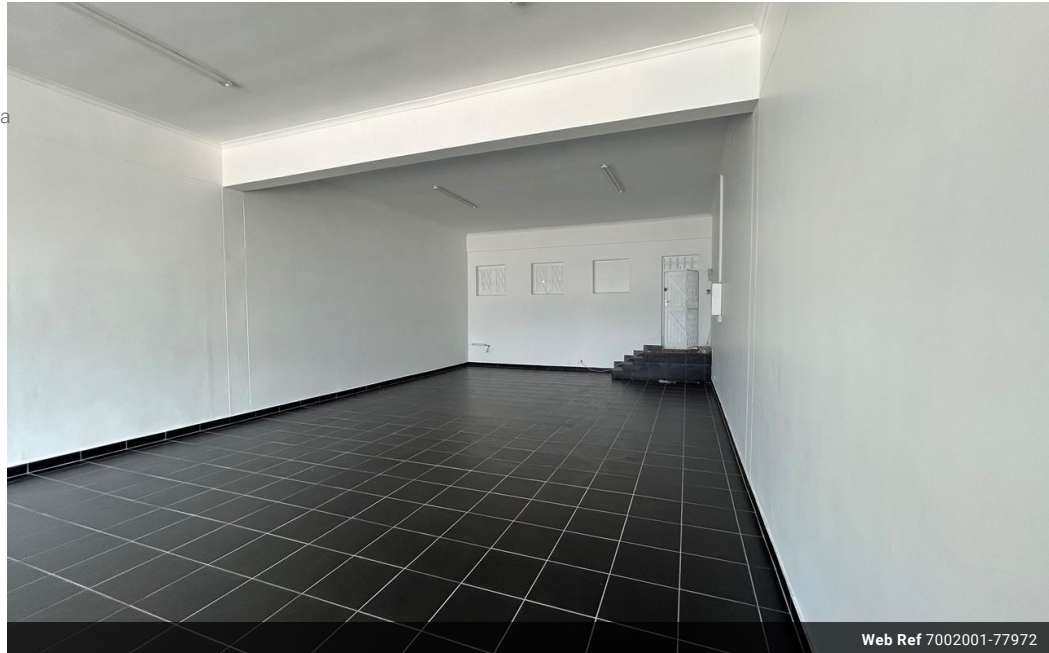


**Meshaan Naidoo**  
079-878-8306  
meshaan.naidoo@expsouthafrica.co.za

Contact eXp Realty

087 8212575

South Africa



Web Ref 7002001-77972



R15,000 pm

Gross Monthly Rental R15,000 Excl. VAT



### Prime Retail Space Available

Bracewell Centre - Shop 3, 308 Cape Road, Newton Park

Available Immediately

Size:100m²

Total Monthly Cost:R15,000.00 (Excl. VAT)

This prime retail/office space features:Huge open-plan layout with tiled flooringKitchenetteFibre-ready connectivityCommunal ablutionsPrepaid electricity

Highlights:Highly visible corner unit on Cape RoadPremises can be altered to suit tenant requirements

### Features

**Zoning** Commercial

#### Exterior

Security Yes

#### Sizes

Floor Size 100m²

Land Size 100m²

#### Extras

Fibre Safe Location Near University/Campus Near Motorway Near Bus Frequency location On Quiet Road Alarm System Near Schools On Busy Road Near Hospital High Speed Internet Pets Not Allowed Near Park Good reachable traffic Near Shops Near Medical Center Near Highway Near Public Transportation City Center Near Fitness centre Near Children's Park Near Shopping Mall Near Golf Course High Traffic Downtown