

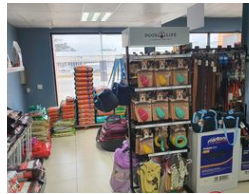


Ian Knott
072-226-3189
ian.knott@expsouthafrica.co.za

Contact eXp South Africa

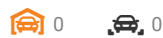
087 8212575

Old Main Road
Johannesburg
South Africa



R22,920 pm

Gross Monthly Rental R22,920 Excl. VAT



191m2 Prime Retail Space

Located on the bustling and vibrant section of Walmer, this prime retail space offers an exceptional opportunity for businesses seeking a prominent and high-visibility location. Situated directly across from the Pick 'n Pay Centre, the store enjoys a strategic position with a steady flow of foot traffic. With its 191m2 open sales area, the space provides ample room for showcasing products and creating an inviting shopping environment. The large windows allow for an abundance of natural lighting, enhancing the appeal and ambiance of the space.

In addition to its fantastic location and spacious sales area, this retail space offers several convenient features. The store comes equipped with eight paved parkings situated right in front of the entrance, ensuring easy access for customers and enhancing the

Features

Zoning Commercial

Sizes

Floor Size 191m²
Land Size 1,500m²

Extras

Alarm System Air Conditioner Air Conditioning Unit Bath Toiletand Basin Fibre Paveway