



Meshaan Naidoo

079-878-8306

meshaan.naidoo@expsouthafrica.co.za

Contact eXp Realty

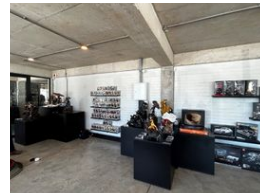
087 8212575

South Africa



SOLE MANDATE

Web Ref 7002001-75186



R13,000 pm

Gross Monthly Rental R13,000 Excl. VAT



0



0

Prime Retail Space on Walmer Main Road Available Now!

Prime Retail Space at The Elvee on Walmer Main Road – Available Now!

Prime Retail Space at The Elvee on Walmer Main Road – Available Now!

Location: The Elvee, Walmer Main Road

Size: 66m² open-plan unit

Monthly Rental: R13,000 (Excl. VAT)

Availability: Immediate Occupancy

Leasing Term: Long-term rental (1 year or more)

Elevate your business in one of Walmer's most sought-after retail locations! This 66m² open-plan space is situated in The Elvee, a prime commercial building on bustling Walmer Main Road. Surrounded by popular restaurants, other retail stores, and offices, this location guarantees high visibility and constant foot traffic. Key Features: Open Plan Layout: A versatile space ready to be customized for your business needs Partitioning Option: The space can be sectioned off with partitions as per the tenant's

Features

Zoning Commercial

Exterior

Security

Yes

Sizes

Floor Size

66m²

Land Size

66m²

Extras

On Busy Road Near Medical Center Good reachable traffic Near Park Near Fitness centre Near Schools Near Bus Fibre Wheelchair Accessible Near Public Transportation Security - System Closed Circuit TV Safe Location Near Motorway Near Hospital Near University/Campus Frequency location High Traffic Near Shopping Mall Near Golf Course Near Shops