



**Wesley Sherman**  
084-455-6614  
wesley.sherman@expsouthafrica.co.za

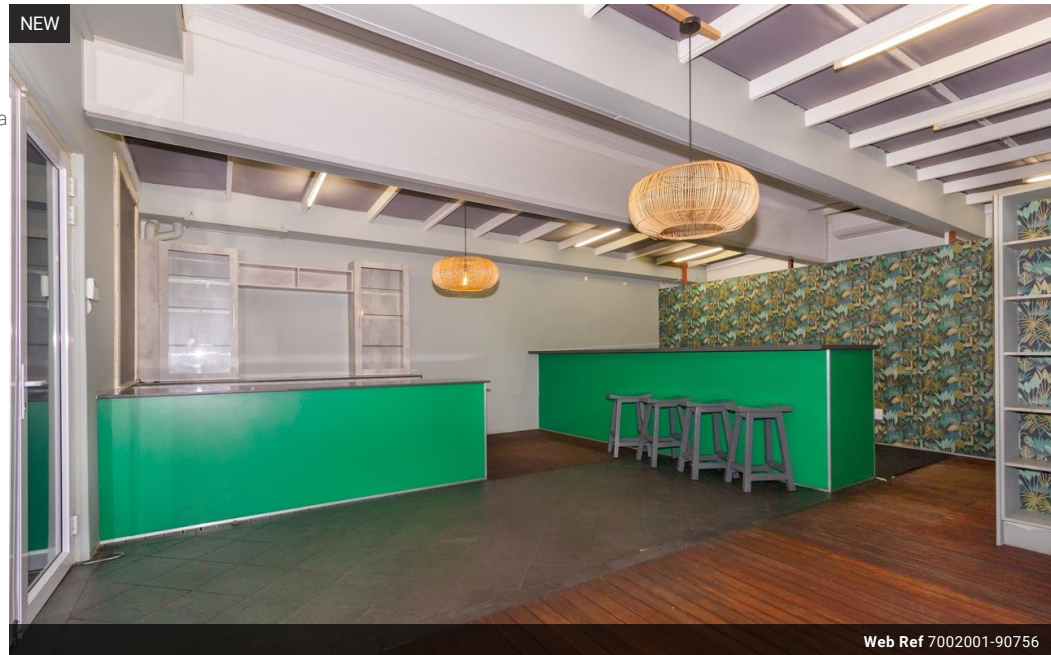


**James Conyers**  
083-444-3037  
james.conyers@expsouthafrica.co.za

Contact eXp Realty

087 8212575

South Africa



Web Ref 7002001-90756



R8,680 pm

Gross Monthly Rental R8,680 Excl. VAT



Charming 62sqm Retail Unit on Main Road Walmer – Ideal for a Small Café or Takeaway

Positioned in the heart of Main Road Walmer, this 62sqm ex-takeaway unit is perfectly suited for a small café, coffee shop, or boutique food outlet. Flanked by a popular hair salon and a retail store, the space benefits from excellent foot traffic in one of Gqeberha's most active commercial strips. Key Features: 62 sqm of usable space, Combination of wooden and tiled flooring, Concealed aluminium entrance door, Built-in counters and cupboard space, Two gas stoves (removal negotiable), Internal wash-up area and separate kitchen, Disabled-friendly toilet, Access to rear loading bay, On-site parking available, Prominent signage opportunity on Main Road, Potential for outdoor seating on the front stoep. Whether you're launching a new venture or relocating to a more visible address, this space offers versatility, convenience, and great

## Features

**Zoning** Commercial

### Sizes

Floor Size 62m²  
Land Size 62m²

### Extras

High Traffic Frequency location Near Schools On Busy Road Near Shops Near Shopping Mall  
Near Fitness centre Near Public Transportation Safe Location Near Airport