

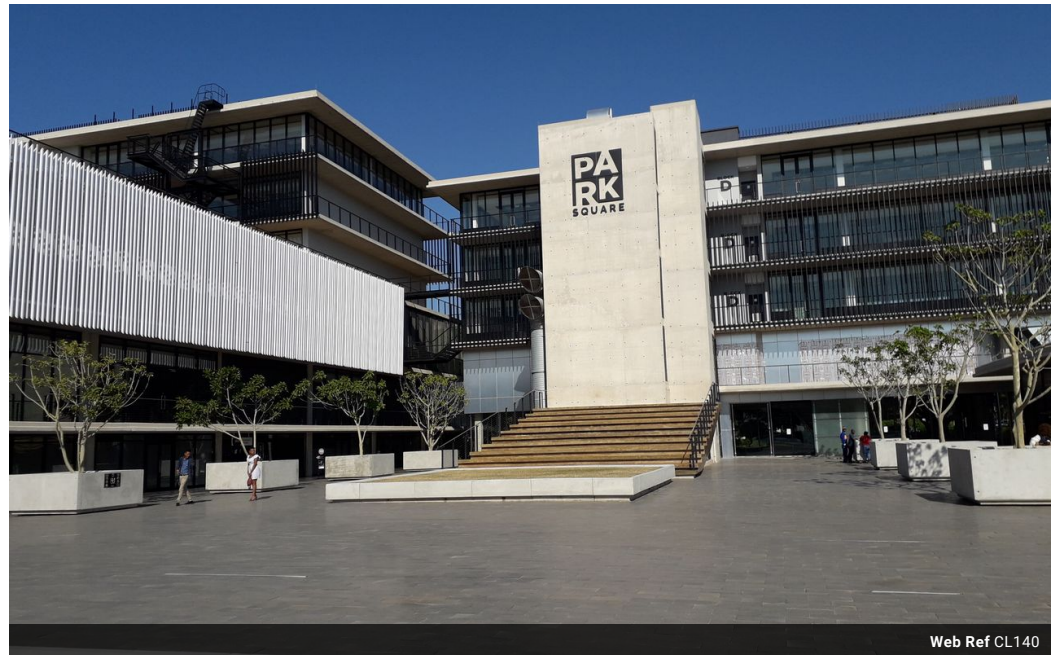


Louis Nyiri
0847025695
louis.nyiri@expsouthafrica.co.za

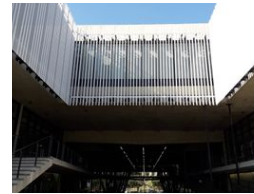
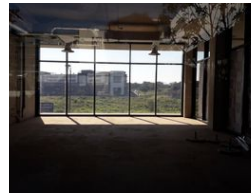
Contact eXp South Africa

087 8212575

Old Main Road
Johannesburg
South Africa



Web Ref CL140



R136,500 pm

Gross Monthly Rental R136,500 Excl. VAT

 28  0

700 sqm prime office to let in Umhlanga , New town

This new subject property measuring internal area of 700 sqm office space and covered balcony area is situated in Umhlanga Gateway area. and there are 28 basement parkings

This particular office space is one of 5 blocks located as Office Blocks above the retail area on ground floor level.

The office blocks all have their own separate security lifts and the blocks are well distanced from each other so privacy and security is created

For more info and viewing please do contact me

Property features:

Balconies with views

28 secure basement bays (at R 950 per bay)

Balcony

Internal GLA area of 700 sqm

Basement parking for visitors

Lift access - wheelchair friendly

Modern design throughout

Private ablutions in lobby

Features

Zoning Commercial

Exterior
Basement Parkings 28

Sizes
Floor Size 700m²