



Louis Nyiri
0847025695
louis.nyiri@expsouthafrica.co.za

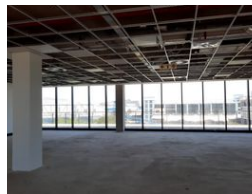
Contact eXp South Africa

087 8212575

Old Main Road
Johannesburg
South Africa



Web Ref CL141



R54,600 pm

Gross Monthly Rental R54,600 Excl. VAT

 11  0

280 sqm prime office space to let in New Town, Umhlanga

This new subject property measuring internal area of 280 sqm office space and covered balcony area is situated in Umhlanga Gateway area. and there are 11 basement parkings

This particular office space is one of 5 blocks located as Office Blocks above the retail area on ground floor level.

The office blocks all have their own separate security lifts and the blocks are well distanced from each other so privacy and security is created

For more info and viewing please do contact me

Property features:

Balconies with views

11 secure basement bays (at R70 000 per bay)

Balcony

Internal GLA area of 280 sqm

Basement parking for visitors

Lift access - wheelchair friendly

Modern design throughout

Private ablutions in lobby

Features

Zoning Commercial

Exterior
Basement Parkings 11

Sizes
Floor Size 280m²