



Warren Fielding
0745881198
warren.fielding@expsouthafrica.co.za

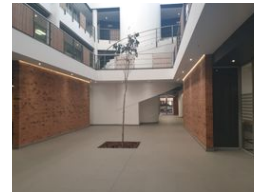
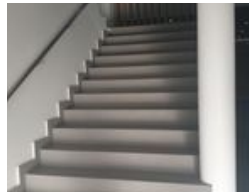
Contact eXp South Africa

087 8212575

Old Main Road
Johannesburg
South Africa



Web Ref CL489



R51,040 pm

Gross Monthly Rental R51,040 Excl. VAT

 0  0

Stunning ocean view offices On Umhlanga Rocks Drive.

This subject office space measuring 392.62sqm is situated on Umhlanga Rocks drive in a beautiful building called the Glass House Office Park in La Lucia Ridge.

Glass House Office Park is a high class professional office destination . The park offers a tranquil office environment and is home to corporate tenants

This office space is on the 1st floor and is above the Multichoice offices

The office comprises a reception area, boardroom, kitchen with seating area, 2 executive offices and an open plan office.

Useable office area : m2

Gross Rental per month : R130m2

In-house coffee shop. (KOFI)

Generator.

Easy access onto the N2 and M4 highway interchanges.

12 total parking bays

Parking Rental Open: R750 per bay

Parking Rental Covered: R850 per bay

Features

Building Name	Glass House				
Zoning	Commercial				
Interior		Exterior		Sizes	
Air Conditioning	Yes	Security	Yes	Floor Size	393m ²