

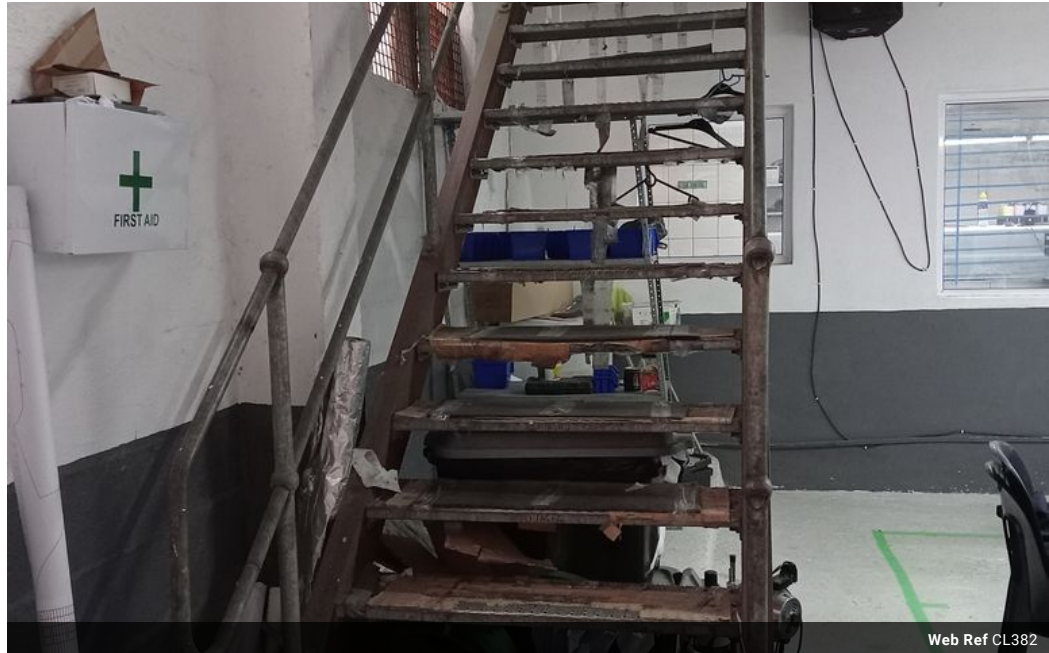


**Warren Fielding**  
0745881198  
warren.fielding@expsouthafrica.co.za

Contact eXp South Africa

087 8212575

Old Main Road  
Johannesburg  
South Africa



Web Ref CL382



R1,800,000



0



0

Mini warehouses for sale or to let.

Very clean light industrial unit measuring 304 m<sup>2</sup> and located in popular Westmead.

This industrial park has a wide entrance and yard space. The unit eaves are 6 m and the roller-shutter door is 4 m in height. Internally it has two air-conditioned offices each measuring 47 m<sup>2</sup>, and is on two levels giving excellent warehouse area which is also clear-span.

There is a kitchen and toilets in the unit. Has 3-phase power.

FEATURES:

- \* Very Clean Light Industrial Unit Measuring 304 m<sup>2</sup>
- \* Roller-Shutter Door 4 m
- \* Eaves 6 m
- \* Double-Volume Air-Conditioned Offices measuring 47 m<sup>2</sup> x 2
- \* 3-Phase Power
- \* Wide Access Road and Ample Parking Area

## Features

**Zoning** Industrial

### Sizes

Floor Size 304m<sup>2</sup>