



Ian Knott
072-226-3189
ian.knott@expsouthafrica.co.za

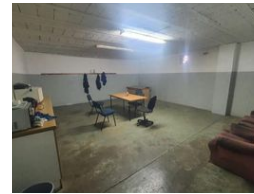
Contact eXp South Africa

087 8212575

Old Main Road
Johannesburg
South Africa



Web Ref 7002001-30993



R2,300,000

 0  30

1076m² Warehouse on 5000m² erf

The factory encompasses a total area of 1,076 square meters and is situated on a 5,000 square meter erf, making it a spacious and potentially versatile location for various industrial activities. One notable feature is its solid facebrick construction, which not only provides an attractive appearance but also offers durability and requires minimal maintenance. With such a construction, the factory is likely to stand the test of time and provide a reliable working environment.

The office block within the factory is designed across two stories. On the ground floor, there are two separate offices, which can serve as private workspaces or meeting rooms. Meanwhile, the first floor features a large open-plan office, offering an expansive

Features

Zoning Industrial

Exterior

Open Parking Bays 30

Sizes

Floor Size 5,000m²
Land Size 5,000m²