



**Juanita van Niekerk**

081-468-2017

juanita.vanniekerk@expsouthafrica.co.za

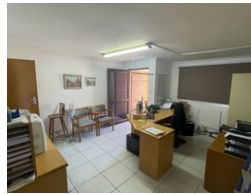
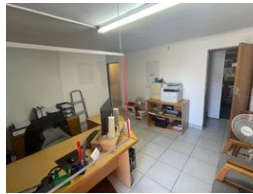
Contact eXp South Africa

087 8212575

Old Main Road  
Johannesburg  
South Africa



Web Ref CL25



R21,600 pm

Gross Monthly Rental R21,600 Excl. VAT



0



4

### 350m2 Industrial unit to rent in Stikland

Premises consist of reception area, ground floor office, restroom and kitchenette. Warehouse area has a 6m roller door and restroom. The wooden structure (office and upstairs restroom) and mezzanine at the back of the warehouse will be removed prior to occupation. Upstairs has 3x private offices.

### Features

**Zoning** Industrial

#### Interior

Power 3 Phase Yes

#### Exterior

Open Parking Bays 4

#### Sizes

Floor Size 350m<sup>2</sup>

#### Extras

24 Hour Access Office Warehouse Secure Parking Rollup Factory