

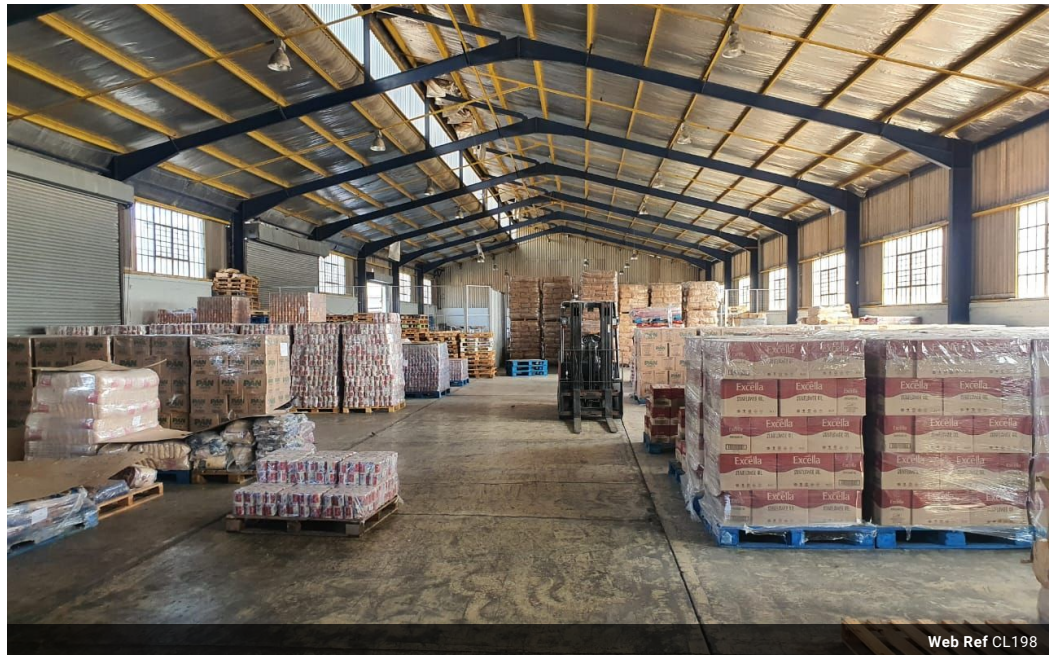


Ian Knott
072-226-3189
ian.knott@expsouthafrica.co.za

Contact eXp South Africa

087 8212575

Old Main Road
Johannesburg
South Africa



Web Ref CL198



R40,880 pm

Gross Monthly Rental R40,880 Excl. VAT



1168m² Industrial Warehouse To Let

This 1168m² industrial warehouse offers an excellent opportunity for businesses looking for both functional space and exceptional branding exposure. Located in the bustling and easily accessible part of North End, it provides a strategic advantage for companies involved in distribution or light manufacturing. The portal style design of the warehouse, coupled with its impressive internal height of 6-8 meters, allows for efficient storage and movement of goods. The presence of five roller doors further enhances accessibility and streamlines logistics operations, enabling seamless loading and unloading processes.

The warehouse is situated within a secure paved yard, ensuring the safety and protection of the stored inventory. This feature

Features

Zoning Industrial

Interior

Air Conditioning Yes

Exterior

Security Yes

Sizes

Floor Size 1,168m²

Extras

24 Hour Access Alarm System Air Conditioner Air Conditioning Unit Fibre Paveway